

NUCLEO64 ext-SMPS

MB1319

Table of contents

Sheet 1: Project overview (this page)

Sheet 2: MB1319_Top

Sheet 3: STM32 microcontroller I/Os

Sheet 4: STM32 microcontroller power

Sheet 5: Arduino extension connectors

Sheet 6: Power

Sheet 7: Power SMPS

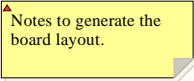
Sheet 8: ST-Link/V2-1

U_mb1319_Top
mb1319_Top.SchDoc



Legend

- General comment such as function title, configuration, ...
- Text to be added to silkscreen.
- Warning text.



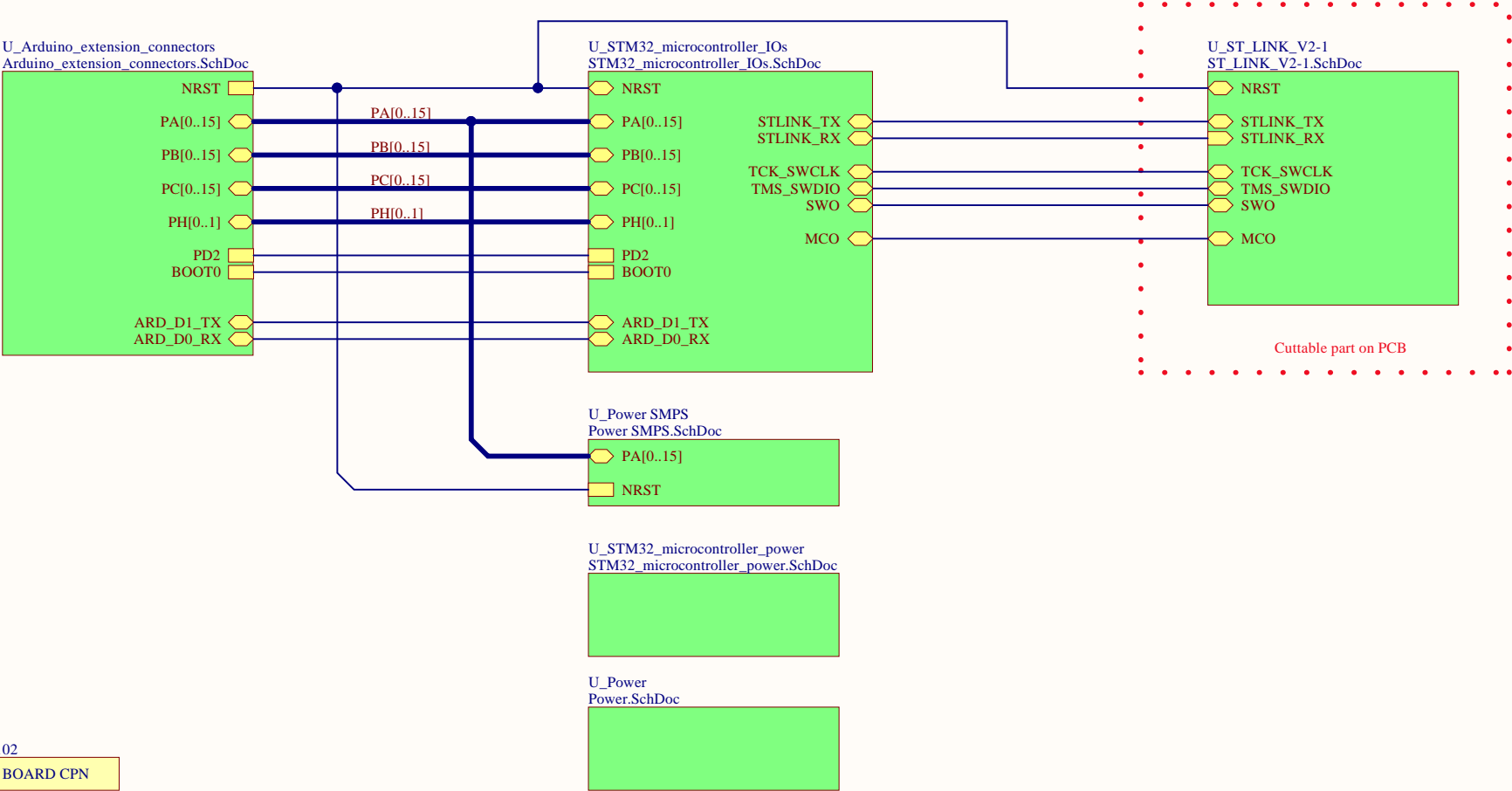
OPEN PLATFORM LICENSE AGREEMENT

The Open Platform License Agreement (“Agreement”) is a binding legal contract between you (“You”) and STMicroelectronics International N.V. (“ST”), a company incorporated under the laws of the Netherlands acting for the purpose of this Agreement through its Swiss branch 39, Chemin du Champ des Filles, 1228 Plan-les-Ouates, Geneva, Switzerland.

By using the enclosed reference designs, schematics, PC board layouts, and documentation, in hardcopy or CAD tool file format (collectively, the “Reference Material”), You are agreeing to be bound by the terms and conditions of this Agreement. Do not use the Reference Material until You have read and agreed to this Agreement terms and conditions. The use of the Reference Material automatically implies the acceptance of the Agreement terms and conditions.

The complete Open Platform License Agreement can be found on www.st.com/opla.





HW101

BOARD REF

MB1319C-01 xxxx

HW102

BOARD CPN

NUCLEO-L412RB-P

HW100

PCB

MB1319C

HW103

BLISTER

NUCLEO64_BLISTER

HW104

DNF

LOGO NUCLEO

HW105

DNF

LOGO ST

HW106

DNF

LOGO CE

HW107

DNF

LOGO ESD

HW108

DNF

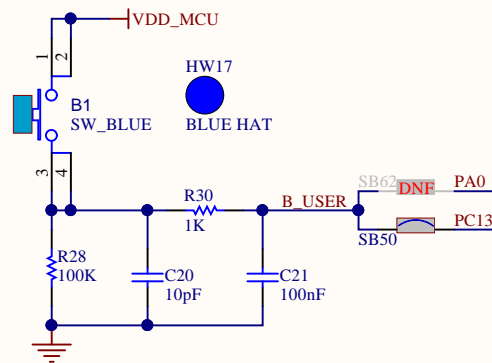
LOGO ROHS

HW109

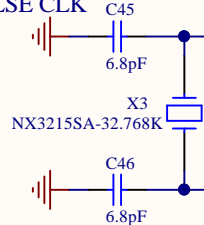
DNF

LOGO STM32

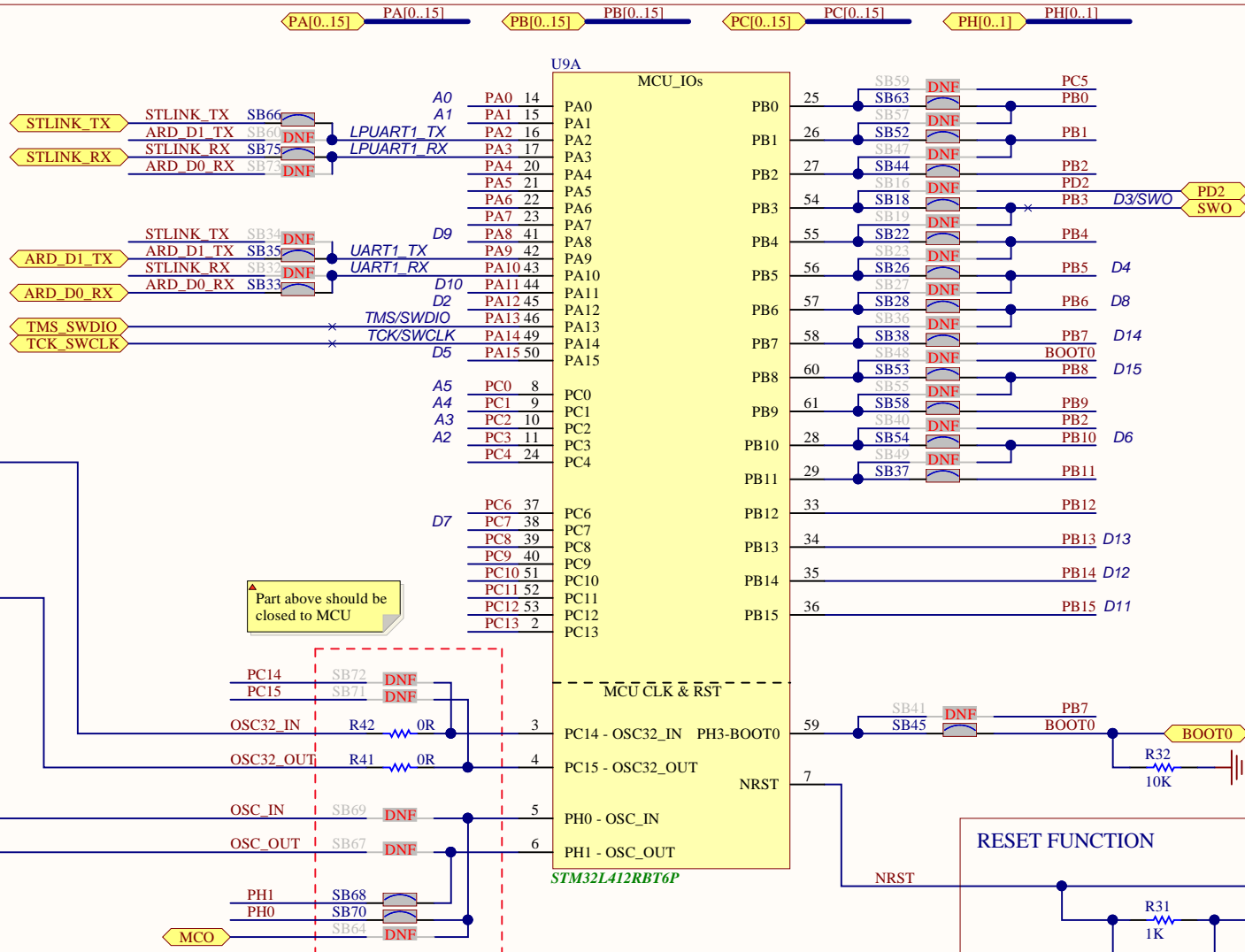
USER BUTTON



EXTERNAL LSE CLK



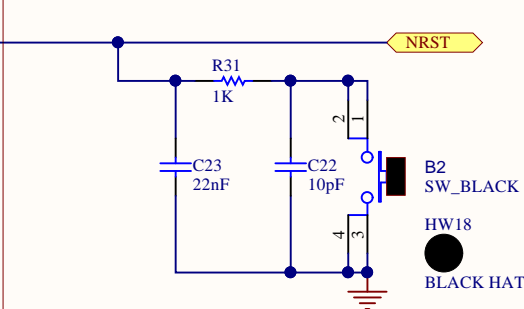
EXTERNAL HSE CLK



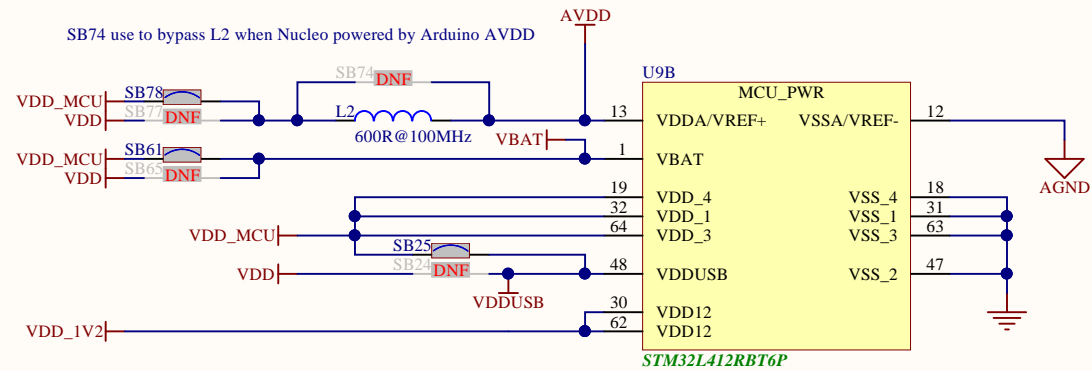
For IC compatible config 1:
 Pin25: PB0: SB63
 Pin26: PB1: SB52
 Pin27: PB2: SB44
 Pin54: PB3: SB18
 Pin55: PB4: SB22
 Pin56: PB5: SB26
 Pin57: PB6: SB28
 Pin58: PB7: SB38
 Pin60: PB8: SB53
 Pin61: PB9: SB58
 Pin28: PB10: SB54
 Pin29: PB11: SB37
 Pin59: PH3-BOOT0: SB45

For IC compatible config 2:
 Pin25: PC5: SB59
 Pin26: PB0: SB57
 Pin27: PB1: SB47
 Pin54: PD2: SB16
 Pin55: PB3: SB19
 Pin56: PB4: SB23
 Pin57: PB5: SB27
 Pin60: PH3-BOOT0: SB48
 Pin61: PB8: SB55
 Pin28: PB2: SB40
 Pin29: PB10: SB49
 Pin59: PB7: SB41

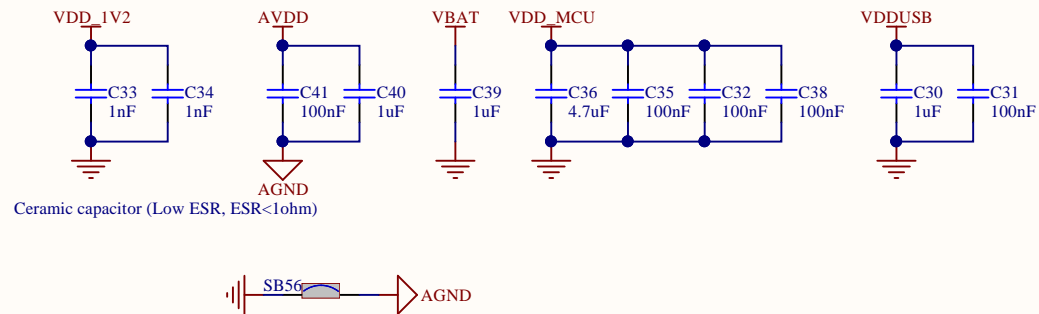
RESET FUNCTION



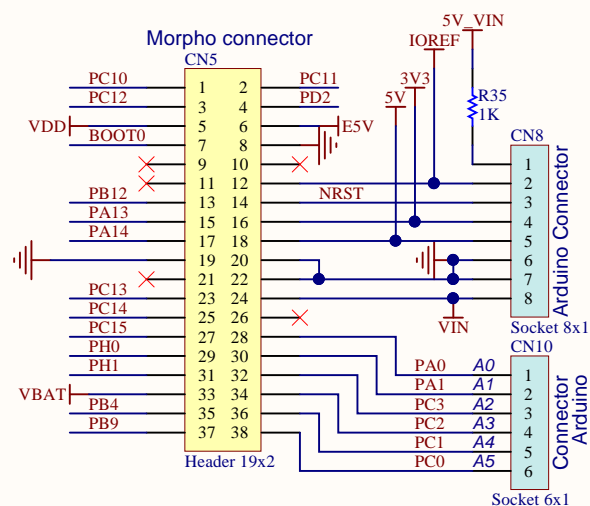
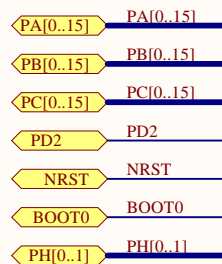
MCU PWR SUPPLIES



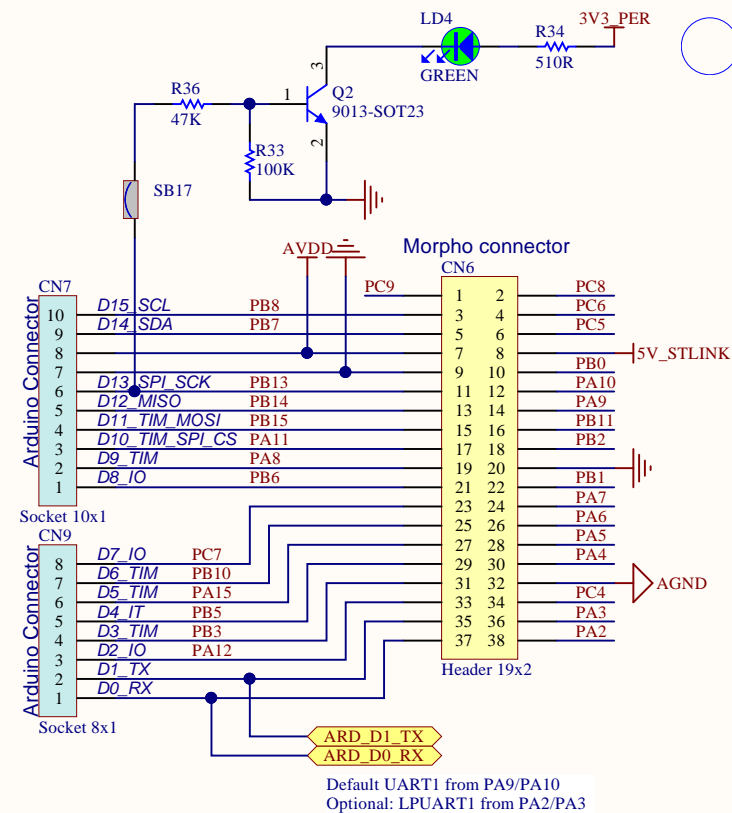
DECAPS



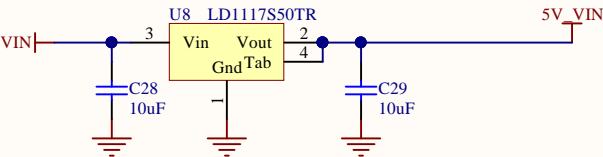
IOREF SELECTION	SB21	SB15	SB14	
IOREF= 3V3	Closed	Open	Open	
IOREF = 3V3_PER	Open	Closed	Open	
IOREF = VDD_MCU Mainly for 1V8 compatibility	Open	Open	Closed	Default



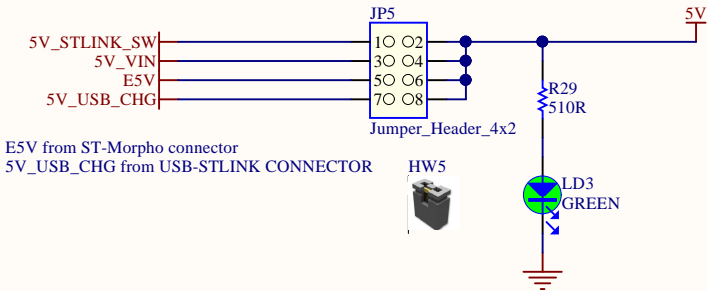
MCU



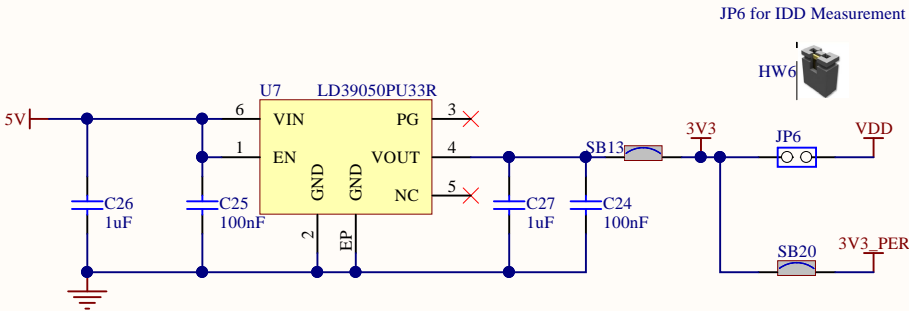
VIN / 5V PWR



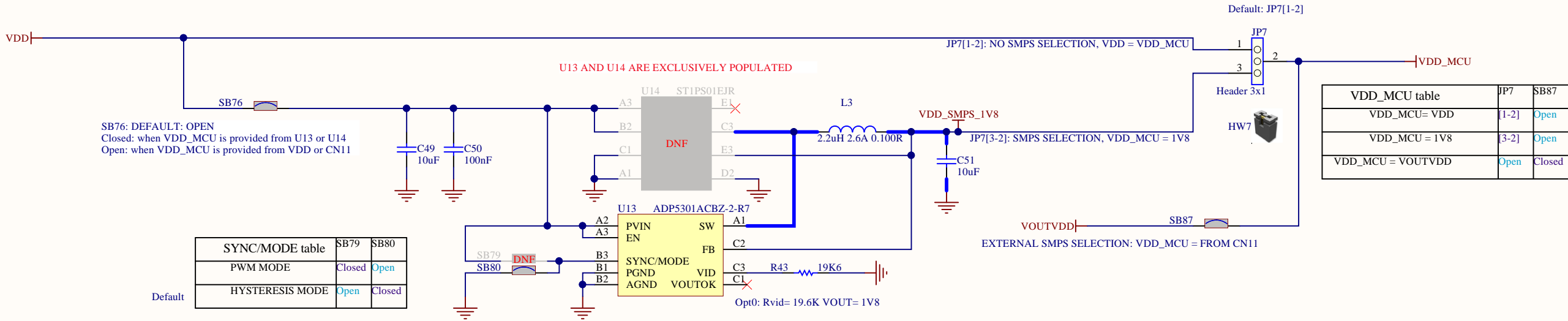
5V PWR SELECTION



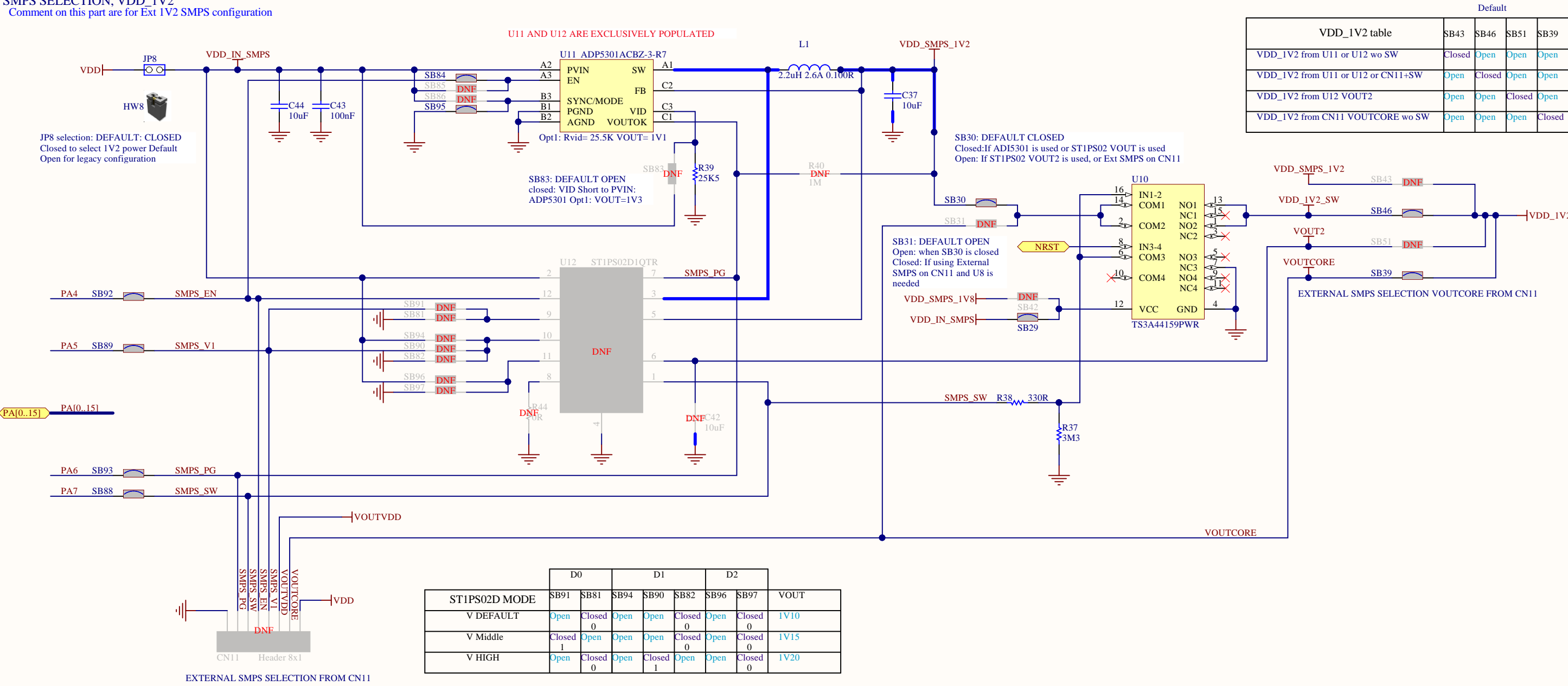
3V3 PWR



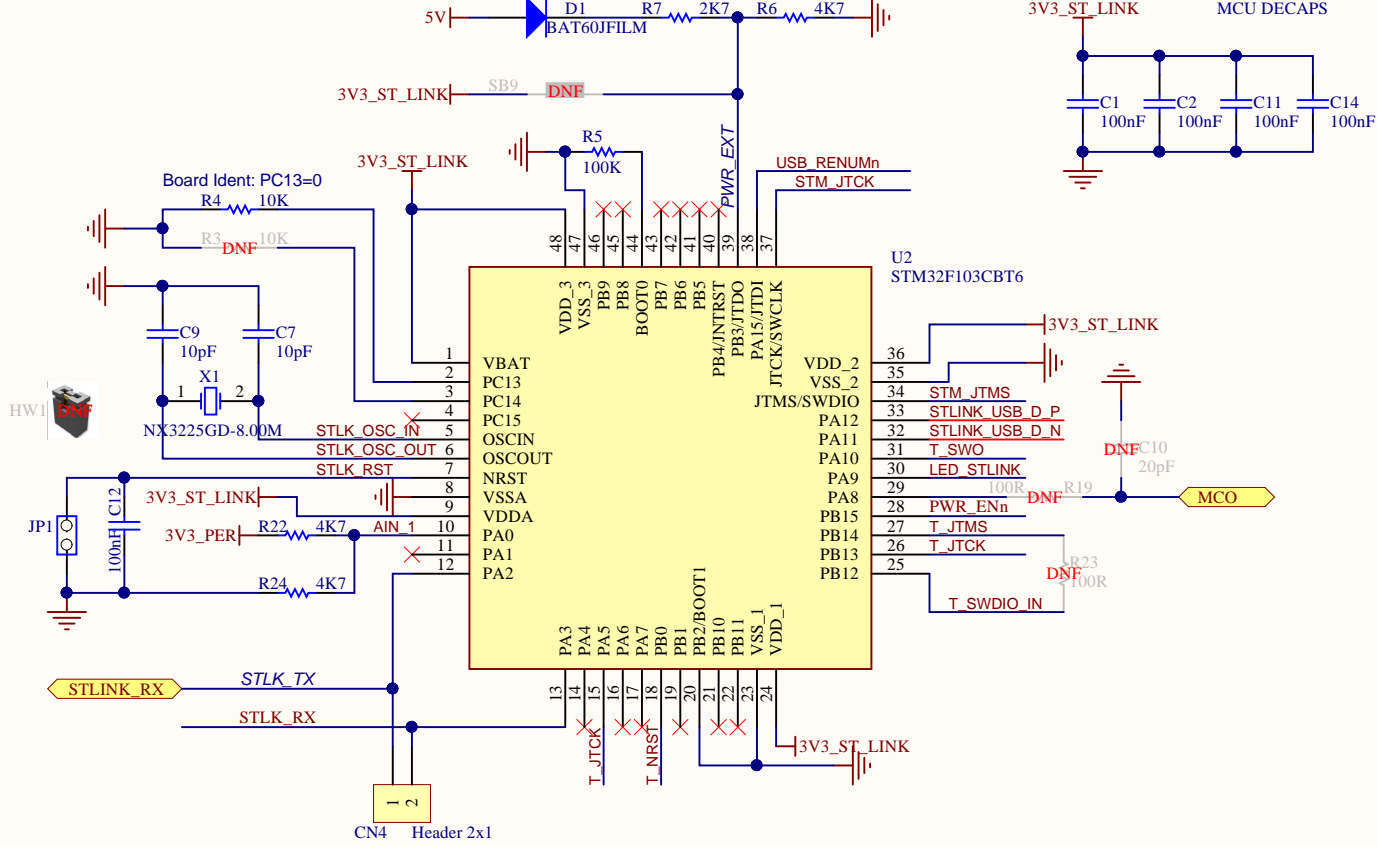
VDD_MCU_SELECTION



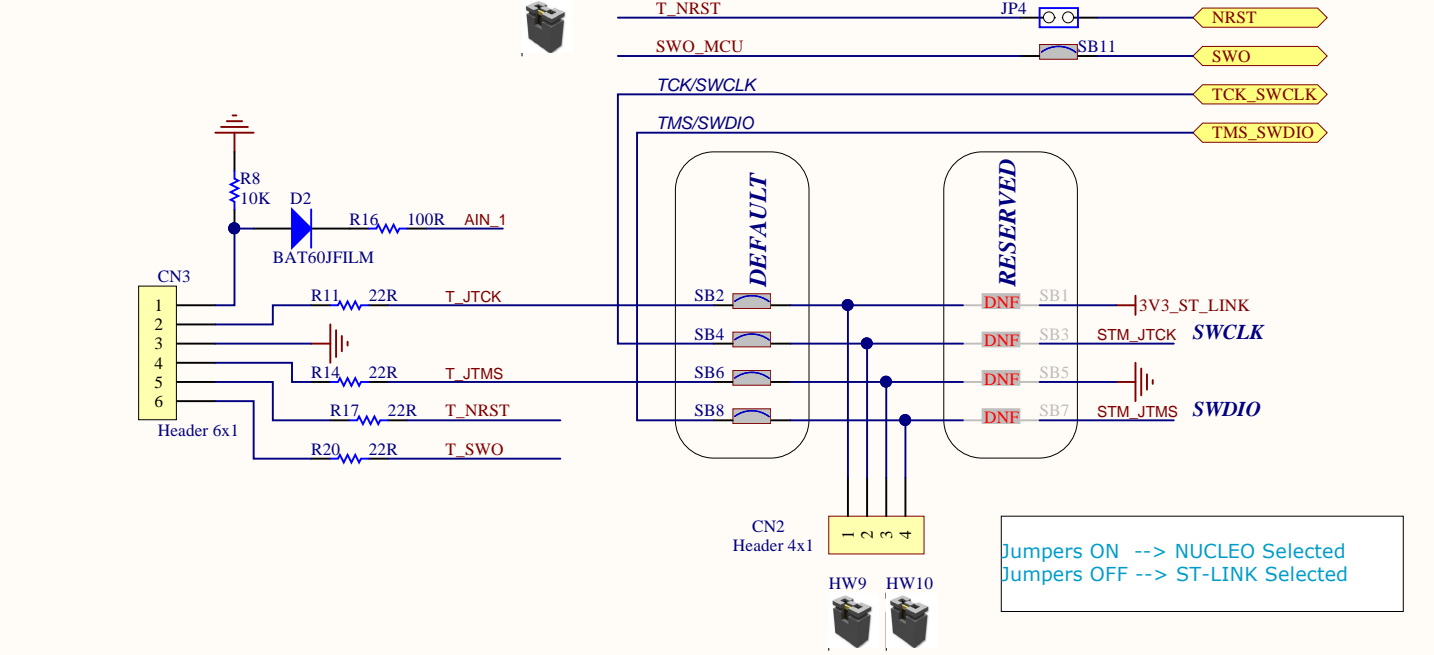
SMPS SELECTION, VDD_1V2
Comment on this part are for Ext 1V2 SMPS configuration



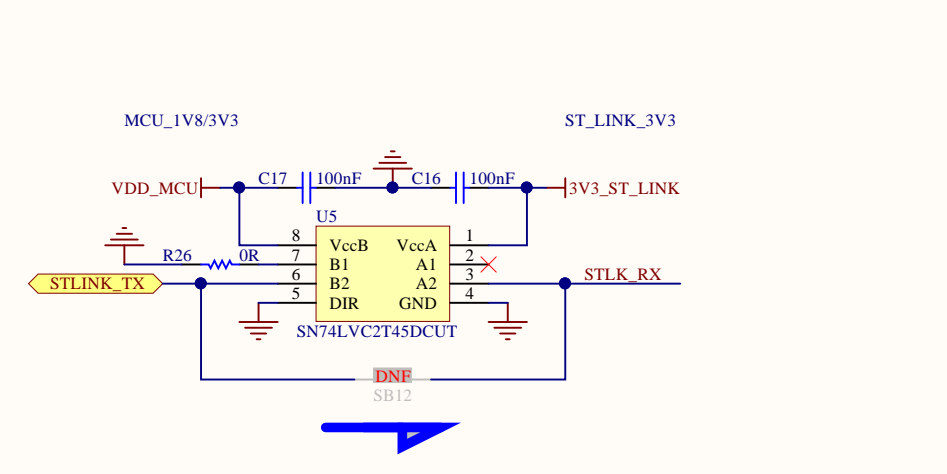
STLINK_MCU



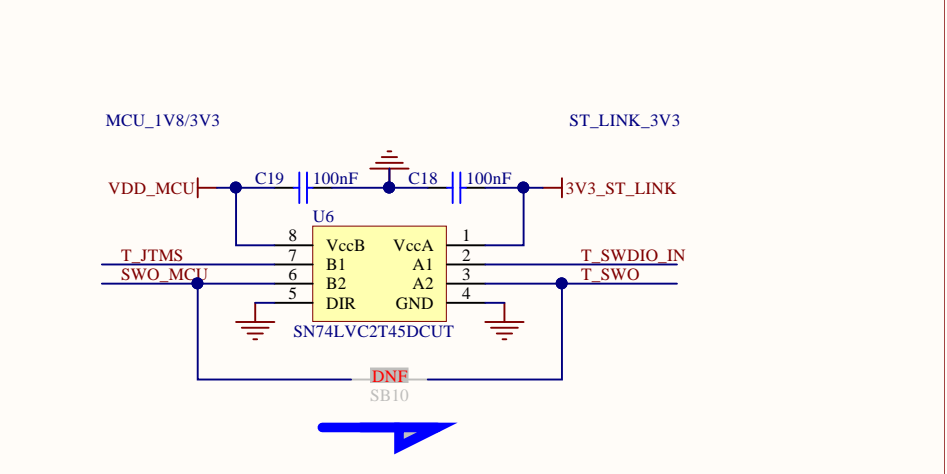
SWD INTERFACE



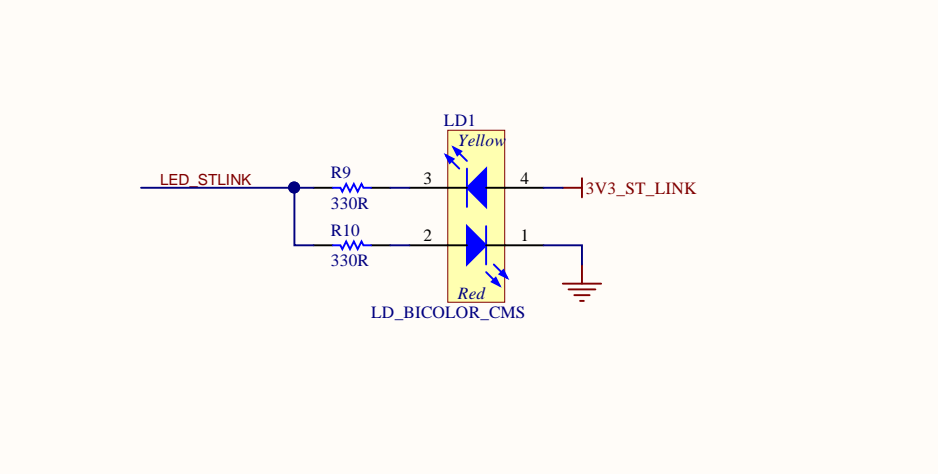
UART_TX LEVEL SHIFTER for MCU_1V8



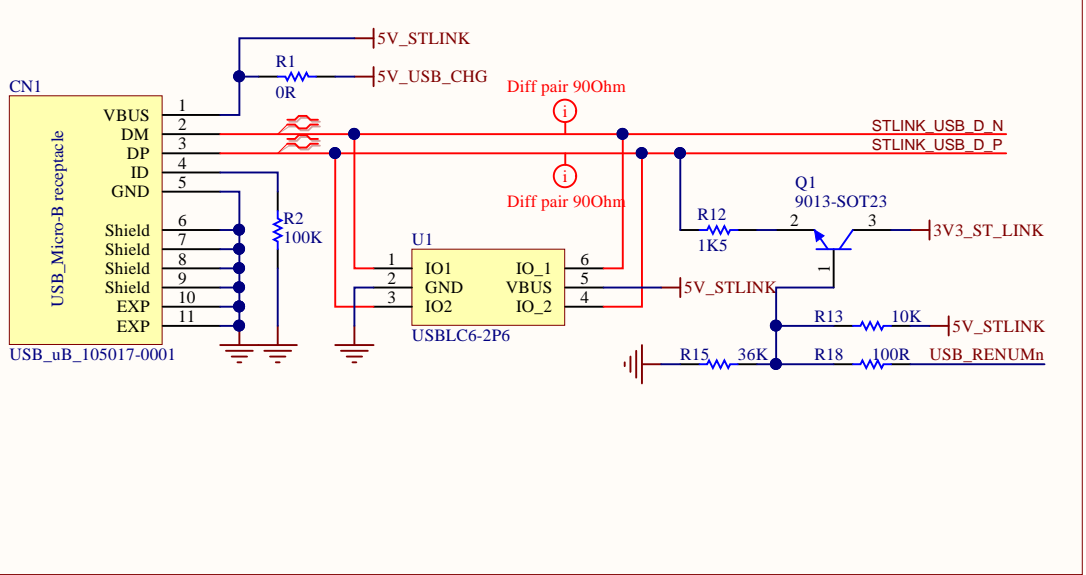
SW LEVEL SHIFTER for MCU_1V8



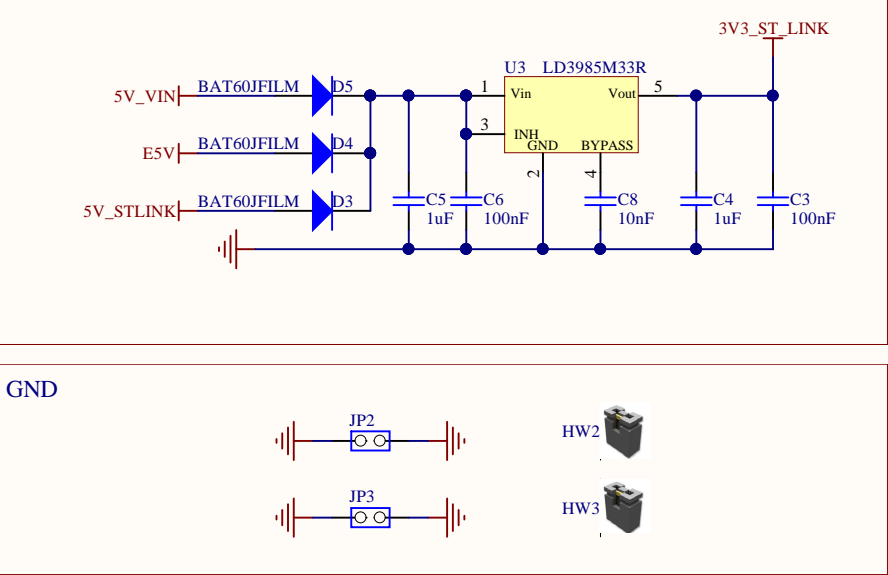
STLINK_LED: COM



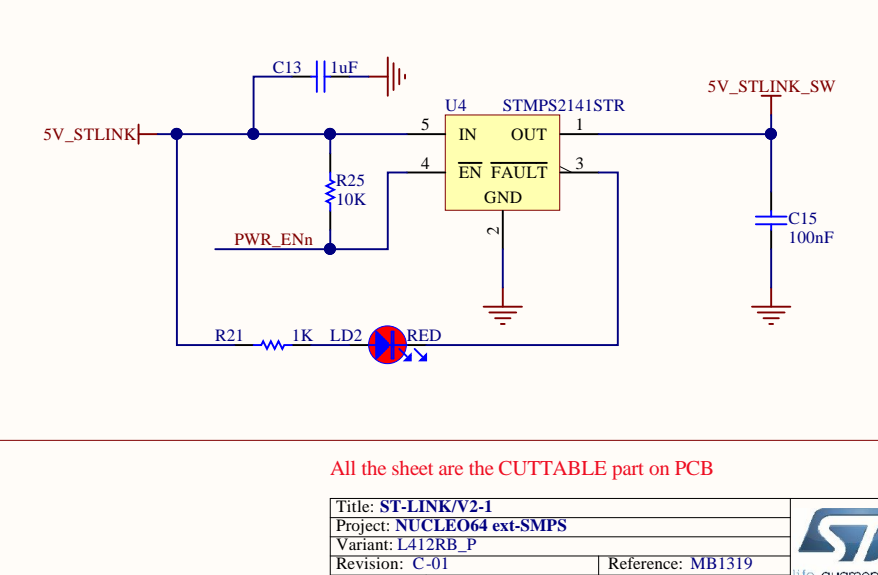
ST-LINK USB CONNECTOR



ST-LINK POWER 3V3 / 150mA



USB 5V POWER SWITCH: 5V / 500mA



All the sheet are the CUTTABLE part on PCB

